

UNIT

J - 07

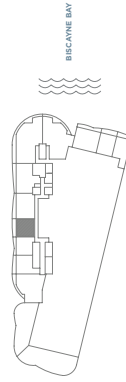
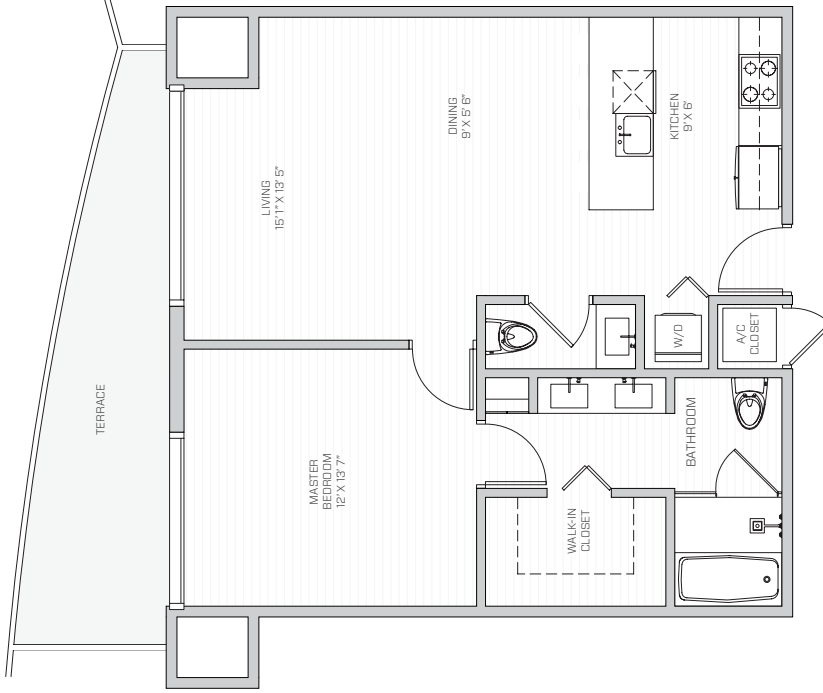
1B & 1.5



AC
814 SQ. FT.
76 SQ. MT.

BALCONY
152 SQ. FT.
14 SQ. MT.

TOTAL AREA
966 SQ. FT.
90 SQ. MT.



ARIP
ON THE BAY
MIAMI

All dimensions are approximate and all floor plans and development plans are subject to change. Overall dimensions of the residence are measured to the exterior face of the exterior walls, and the net surface of interior dividing walls between units and to face of the exterior walls, and are determined by using the descriptions and definition of the "Net" set forth in the Declaration, which generally only includes the interior space between the perimeter walls and excludes all interior structural components and other common elements. This method used herein is generally found in sales material and is provided to allow a prospective buyer to compare the units with units in other condominium projects that will be the same method. Measurements of rooms set forth on this floor plan are generally taken at the furthest points of each given room (as described above) and as if the room were a perfect rectangle, without regard for any cutouts or variations. Accordingly, the area of the actual room will typically be smaller than the product obtained by multiplying the stated length and width. All square footage and dimensions are estimates which are based on preliminary plans and will vary with actual construction. This floor plan represents the typical floor plan for the residence type indicated and is provided for informational purposes only. The actual floor plan of the residence may differ. All floor plans, specifications and other development plans are prepared for conceptual only, and are subject to change and are not necessarily accurate to reflect the final plans and specifications for the development.