

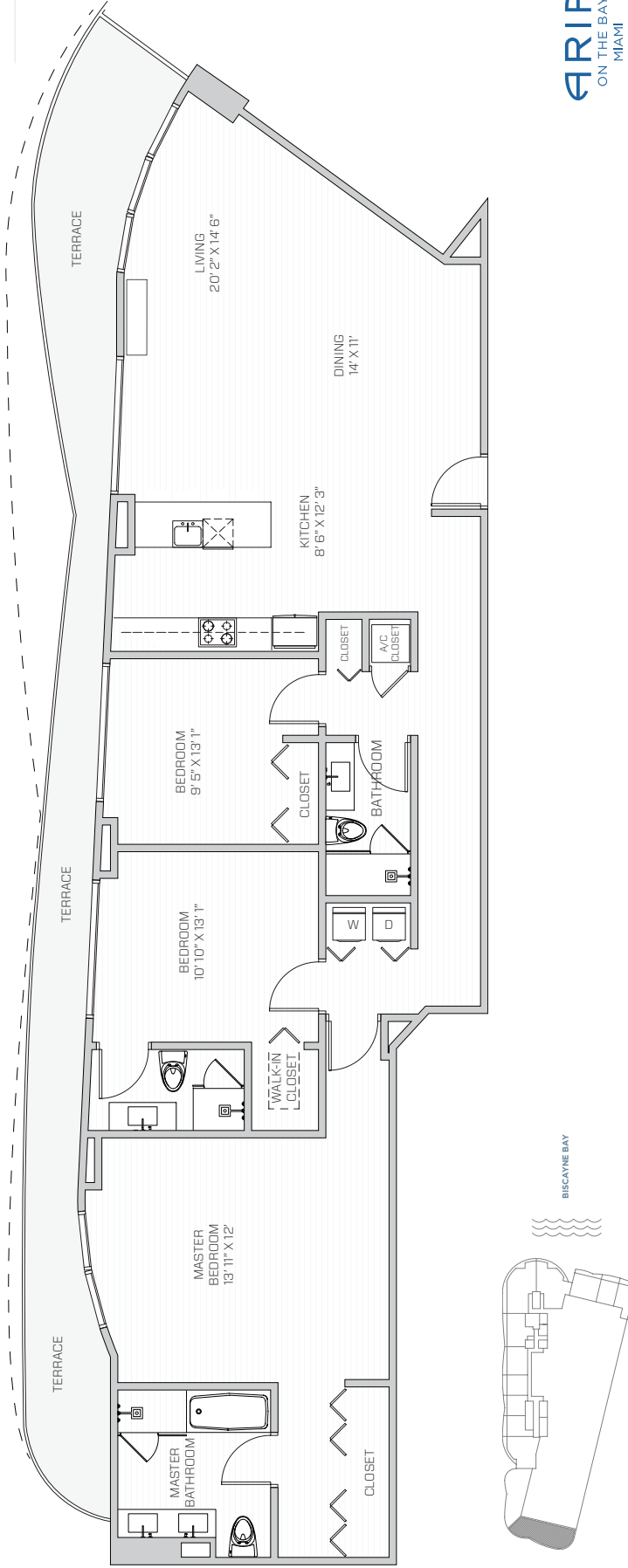
UNIT
R-00
 3B & 3



AC
 1,681 SQ. FT.
 156 SQ. MT.

BALCONY
 398/338 SQ. FT.
 37/32 SQ. MT.

TOTAL AREA
 2,079/2,019 SQ. FT.
 193/188 SQ. MT.



BISCAYNE BAY

ARIP
 ON THE BAY
 MIAMI

All dimensions are approximate and all floor plans and development plans are subject to change. Stated square footages and dimensions are measured to the exterior boundaries of the exterior walls and the centerlines of interior demising walls between units and in fact vary from the dimensions that would be determined by using the description and definition of the "Unit" set forth in the Declaration (which generally only includes the exterior walls and includes all interior structural components and other common elements). This method used herein is generally found in sales materials and is provided to allow a prospective buyer to compare the Units with units in other condominium projects that utilize the same method. Measurements of rooms set forth on this floor plan are generally taken at the farthest points of each given room (as described above and as if the room were a perfect rectangle), without regard for any cutouts or variations. Accordingly, the area of the actual room will typically be smaller than the product obtained by multiplying the stated length and width. All square footages and dimensions are estimates which are based on preliminary plans and will vary with actual construction. This floor plan represents the typical floor plan for the residence type indicated and is provided for informational purposes only. The actual floor plan of the residence may differ. All floor plans, specifications and other development plans are proposed and conceptual only, and are subject to change and will not necessarily accurately reflect the final plans and specifications for the development.